



# A3 Sheet-fed Duplex Scanner

High Scan Rate and Great Performance

### Features:

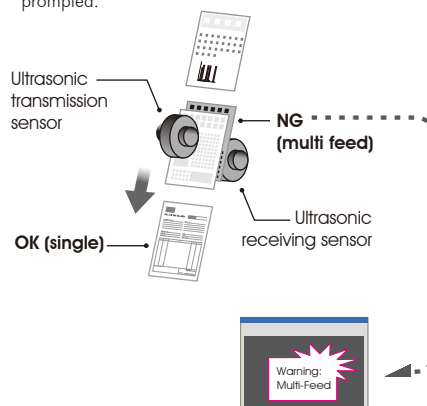
- Scan rate up to 60 PPM/120 IPM at 300 dpi in color, grayscale, and B&W mode
- Scan rate up to 80 PPM/160 IPM at 200 dpi, B&W mode
- Support documents up to A3 size
- 118" ( 300 cm ) long document scanning
- Support plastic cards scanning
- Ultrasonic multifeed detection
- Professional bundled software includes Avision Button Manager 2, AvScan 5.0 ScanSoft PaperPort 14 SE
- One button functionality allows you to assign up to nine scanning applications and select at the touch of a button

The Avision AV320E2+ is our most advanced and powerful high speed sheet-fed document scanner. It is capable of scanning documents up to A3 sizes, ensuring a wide range of document compatibility at your workplace. Equipped with new and improved anti-skew rollers, it can take virtually any A8 to A3 size mixed documents you throw at it.

The most amazing aspect of the AV320E2+ is its incredible scanning speed – an outstanding high speed of 60 ppm / 120 ipm at 300dpi resolution in color, grayscale, and B&W mode.

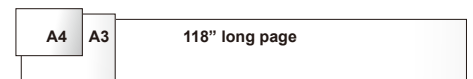
### Ultrasonic Multi-Feed Detection

With the built-in ultrasonic multi-feed detection capability, the scanner allows you to set overlapped paper by detecting paper thickness between document. When multi-feed is detected a warning message will be prompted.



### Long Document Scanning

The AV320E2+ provides you a convenient feature to scan long-page document up to 118" (300 cm). This is a cost and time-saving solution for insurance company and healthcare institutions that need to digitize insurance bills and patient's records.



### Intelligent Image Enhancement Tool

When the original documents are contaminated or damaged, containing marks, white fonts, etc., the intelligent image enhancement tool helps you create sharp and crisp image.



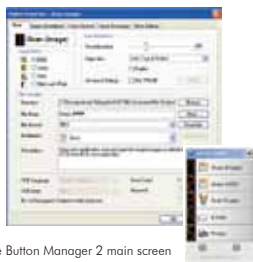
### What we have bundled

The Avision AV320E2+ comes with TWAIN and ISIS drivers, and is bundled with Avision Button Manager, Avision AvScan 5.0, and ScanSoft PaperPort 14 SE software application.

# Avision AV320E2+ A3 Sheetfed Scanner

## Avision's Button Manager 2

Complete your scan in a single step



The Button Manager 2 main screen

## AvScan 5.0

-The Intelligent Document Management Tool



The AvScan 5.0 main screen

## ScanSoft PaperPort 14 SE

- The Professional Choice to Organize and Share Your Documents



The PaperPort 14 SE main screen

Button Manager 2 makes it easy for you to scan and send your image to your favorite destinations with a press one button. Now the new version comes with an innovative feature to let you scan and automatically upload the scanned document to popular cloud repositories such as Google Docs, Microsoft SharePoint, or FTP. In addition, the iScan feature allows you to insert the scanned image or recognized text after optional OCR (Optical Character Recognition) process to your text editor such as Microsoft Word to get your job done easily and quickly.

Document Imaging is the very first step of Document Management. However, poor quality images can cause serious problems to later indexing or storing processes. It may increase scanning labour costs and lowers the OCR accuracy. AvScan 5.0 ensures all documents are checked and polished at the time they are scanned such that the image quality is guaranteed before they are ready to use for other purposes.

AvScan 5.0 is an intelligent scanning and electronic filing solution. AvScan 5.0 possesses distinct features that convert and index scanned information into electronic documents for easy storage and fast retrieval.

PaperPort 14 SE is Nuance's most popular scanning and document management solution, carefully designed specifically for home office use. Part traditional file cabinet, part digital-document desktop, PaperPort 14 SE is the fastest and easiest way to scan, share, search, and organize your documents. Additionally, PaperPort 14 SE now delivers anytime-anywhere access to your most important files however it's convenient for you – using a PC, Mac, iPhone, iPad, or Android device.

## Avision AV320E2+ Product Specifications

Paper Feeding:	ADF 150-page capacity (60g/m <sup>2</sup> or 16 lbs)
Scanning Technology:	Color Charged-Coupled Device (CCD)
Card Thickness:	Up to 1.25mm
Scanning Type:	Duplex
Document Size:	Max. 297 mm x 432 mm (11.7 in x 17 in) Min. 50 mm x 88 mm (2 in x 3 in)
Scanning Speed:	80 PPM/160 IPM (200 dpi, B/W) 60 PPM/120 IPM (300 dpi, color)
Paper Thickness:	28~413 g/m <sup>2</sup> (7~110 lbs)
Long Page Mode:	118" (300 cm)
Optical Resolution:	600 dpi
Output Resolution:	75, 100, 150, 200, 300, 400 and 600 dpi
Output Formats:	B/W, greyscale, 24-bit color
Bundled Software:	Avision AvScan 5.0 Avision Button Manager 2 PaperPort 14 SE
Interface/Drivers:	USB 2.0 / TWAIN/ISIS
Power Supply:	Input: 100~240 VAC, 50/60 Hz Output: 24V, 2A
Power Consumption:	<68 W
Environmental Factors:	Operating temperature: 10°C to 35°C (50°F to 95°F) Operating humidity: 10% to 85%
Acoustical Noise:	Standby: <45 dB Operating: <58 dB
Dimensions( W x D x H):	420 mm x 216 mm x 250 mm (16.5 in x 8.5 in x 9.8 in)
Weight:	12 kg (26.4 lbs)
Recommended Daily Scanning Volume:	Up to 8,000 pages
Multi-feed Detection:	Ultrasonic

## System Requirements

- Pentium 4 or higher
- Windows®XP/2000/Vista/7
- 256MB RAM for Windows XP
- CD-ROM drive
- USB port

## Contents

- AV320E2+ Scanner
- Power Supply
- Quick Guide
- USB 2.0 Cable
- CD-ROM includes:
  - Scanner Driver (TWAIN/ISIS Driver)
  - Avision Button Manager 2
  - Avision AvScan 5.0
  - ScanSoft PaperPort 14 SE

**Avision**  
www.avidion.com

## Avision Inc.

No. 20, Creation Rd. I  
Hsinchu Science Park 30077, Taiwan,  
R.O.C.

Tel: 886-3-5782388

Fax: 886-3-5777017

E-mail: sales@avidion.com.tw

## Avision Europe GmbH

Bischofstr. 101  
47809 Krefeld  
Germany

Tel: +49-2151-15759-0

Fax: +49-2151-56981-42

E-mail: info@avidion-europe.com

